



## Vicem Classic – Essence

<b>Make:</b>	Vicem	<b>Boat Name:</b>	Essence
<b>Model:</b>	Classic	<b>Hull Material:</b>	Composite
<b>Length:</b>	85 ft	<b>Draft:</b>	6 ft
<b>Price:</b>	USD 3,850,000	<b>Number of Engines:</b>	2
<b>Year:</b>	2006	<b>Fuel Type:</b>	Diesel
<b>Condition:</b>	Used	<b>Number:</b>	562792
<b>Location:</b>	Palm Beach, FL, USA		

## The "Essence"

---

*This fine yacht has had a \$150,000 price reduction on March 1st.*

*Her two-boat owner is ready to become a one-boat owner.*

Vicem's fine line of motor yachts have become widely known for their beauty, style and seaworthiness. With the launch of this 85 Express, Vicem believes they have achieved a truly "once-in-a-decade" yacht.

*Essence* is widely known as the most impressive Down East-style yacht ever splashed. She was custom-built by her very knowledgeable owner to make her fully operational on both sides of the pond. She is fully MCA-compliant, and superbly suited for charter (her many celebrity guests would agree) with careful consideration given to crew accommodations.

*Essence* boasts both formal and informal salons and dining areas, distinctive natural lighting, and a stunning "his & her's" full-width head. Several industry professionals have called her Master's Cabin the finest they have ever seen, surpassing even Mega-yacht standards.

Vicem's design team worked closely for almost two years with one of the most highly regarded interior designers on the East coast. Details, fit, and finish are spectacular, surpassing even Vicem's normally high standards. The owner's change of plans makes this fully commissioned yacht (which has just been re-painted, and had spray rails installed) available for immediate delivery.

**\*\*NOT OFFERED FOR SALE OR CHARTER TO U.S. CITIZENS/RESIDENTS WHILE IN U.S. WATERS\*\***

### Measurements

---

Cruising Speed:	21 kn	Number of Cabins:	3
Max Speed:	29 kn	Number of Heads:	3
LOA:	85 ft		
LWL:	82 ft		
Beam:	20 ft 8 in		
Max Draft:	6 ft		

### Propulsion

---

Number of Engines:	2
Engine Make:	MAN

---

Vicem Yachts Inc. - Dave Mallach  
Vicem Yachts - Lake Success NY, 1979 Marcus Ave., Suite 210, Lake Success NY  
Tel: 516-816-1703 Tel: (516) 622-2258 d.mallach@vicemusa.com

## Dimensions

---

Displacement: 140000

## Engines

---

Total Power: 1050 HP

## Tanks

---

Fuel: 1900 gls

Fresh Water: 500 gls

Holding: 300 gls

## Pilot House

---

The Pilothouse is on the Starboard side of the upper level. All the instruments are flush mounted

- Simrad CX54 chart plotter combo unit also displays depth, wind and temp
- Simrad RA51 radar
- Simrad IS 15 gauges for either logs, speed, wind or depth
- Simrad AP 25 autopilot
- Wema fuel gauges displaying fuel levels in the three fuel tanks
- Fire Boy fire system gauge
- Lenco trim tabs
- Jabsco ITT spotlight
- Bilge control switches
- Side power thruster
- Onan Generator remote controls for the generators, showing oil temp, coolant temp, volts and hrs. Also capable of starting the generators from the Wheelhouse

## Wheelhouse Salon

---

- Two remotely controlled glass panels separate the Wheelhouse Salon with the boats insignia on it.
- Panasonic 37" plasma TV that doubles as a computer Monitor. It is situated on the backside of the desk. It remotely stores behind the desk.
- BOSE Surround System with DVD

---

Vicem Yachts Inc. - Dave Mallach

Vicem Yachts - Lake Success NY, 1979 Marcus Ave., Suite 210, Lake Success NY

Tel: 516-816-1703 Tel: (516) 622-2258 d.mallach@vicemusa.com

- GE Icemaker and sink on the opposite site of the Salo

## Salon

---

- Pioneer 42" HD TV which is monitor capable
- Yamaha Cinema Station Surround System
- Premier all region DVD player

## Engine Room

---

The engine room for this size yacht is very large, it has over 6' headroom and everything is very accessible. The engine room has diamond plate flooring.

- 2 MAN V12 1200 HP engines
- 2 Onan generators each producing 22.5 KW - 780 hours (September 06)
- Twin disk transmissions
- 2 Fresh water pumps, one 220v and the other 24v each with their own expansion tanks.
- 2 Racor 75100 MAX fuel filters per engine.
- 1 Racor 500 MA fuel filter per Generator
- 2 Fire boy 57.1 pound Manual/Auto fire extinguishers
- 2 Newmar "phase three" charges, engine and house batteries
- 3 fuel tanks. 2 X 3200L and the other 800 L
- Fuel transfer system for transferring fuel between the tanks, either electric or manual

## Galley

---

The galley has all stainless steel appliances with granite counter tops

- GE Trash compactor
- GE 5 Plate stove and convection oven
- GE Dishwasher
- GE Microwave/Convection Oven
- GE Refrigerator, Freezer Combo with Icemaker, Water and Crushed Ice Dispenser
- Sharp 19" TV

## Master Suite

---

The master cabin has a King size bed with a couch on the port side and a makeup table on the Starboard side. There is also a walk in closet. The bathroom for two is separated by a large shower.

- Pioneer 42" Plasma TV
- Yamaha cinema station surround sound system
- Premier all region DVD player
- GE mini refrigerator

## Port & Starboard Guest Cabins

---

- Sharp 19" TV
- Premier all region DVD player
- Shower, toilet and basin

## Aft & Fore Deck

---

- GE Stainless steel refrigerator
- GE Ice maker
- Sink and wet bar
- Dual anchors
- The tender stores on the swim platform. The swim platform is fully hydraulic which enables the platform to submerge into the water to be able to launch and retrieve the tender.

## Disclaimer

---

The Company offers the details of this vessel in good faith but cannot guarantee or warrant the accuracy of this information nor warrant the condition of the vessel. A buyer should instruct his agents, or his surveyors, to investigate such details as the buyer desires validated. This vessel is offered subject to prior sale, price change, or withdrawal without notice.

# Photos

---



Photo 1



Helm



Wheelhouse



Lower Salon



Stairs



Galley

---

Vicem Yachts Inc. - Dave Mallach  
Vicem Yachts - Lake Success NY, 1979 Marcus Ave., Suite 210, Lake Success NY  
Tel: 516-816-1703 Tel: (516) 622-2258 d.mallach@vicemusa.com



Master suite



Guest Cabin



Guest cabin



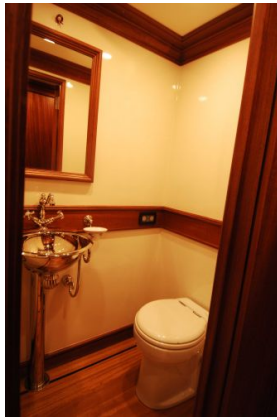
Cockpit / salon entry



Head



Head sink



Head



Salon



Salon



Nav desk



Engine room



Engine room





Transom



Port



Starboard



Lower Salon



Lower Salon